

4

3

2

1

D

D

C

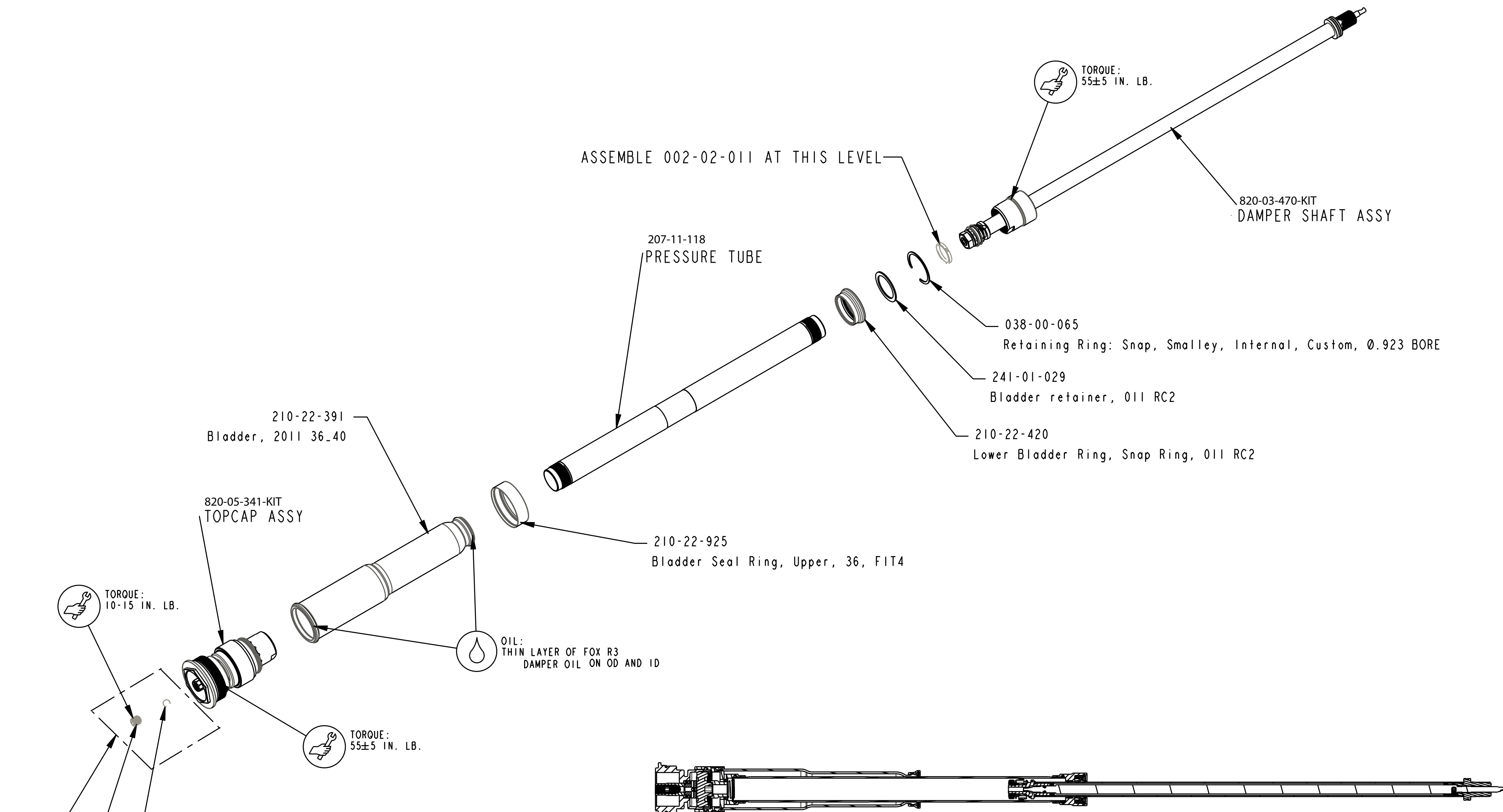
C

B

B

A

A



TORQUE:  
10-15 IN. LB.

TORQUE:  
55±5 IN. LB.

TORQUE:  
55±5 IN. LB.

210-22-391  
Bladder, 2011 36.40

820-05-341-KIT  
TOPCAP ASSY

ASSEMBLE 002-02-011 AT THIS LEVEL

207-11-118  
PRESSURE TUBE

038-00-065  
Retaining Ring: Snap, Smalley, Internal, Custom, Ø.923 BORE

241-01-029  
Bladder retainer, 011 RC2

210-22-420  
Lower Bladder Ring, Snap Ring, 011 RC2

210-22-925  
Bladder Seal Ring, Upper, 36, FIT4

OIL:  
THIN LAYER OF FOX R3  
DAMPER OIL ON OD AND ID

010-01-001  
Air Valve Parts: Ball [Ø 0.1875] E52100 Grade 25 Steel, Chrome

019-01-107  
Fastener Standard (Metric): Socket Set Screw [M6 x 1.0 x 6.0MM] Flat PT, SST

ASSEMBLE THESE PARTS AFTER OIL FILL

**FOX** FOX Factory, Inc. Ph 831-768-1100  
130 Hangar Way, Watsonville, CA 95076 USA Fax 831-768-9312

TITLE  
**2016 36**  
**P-S FIT4 Cart Assy**

SIZE DWG. NO.  
**C**  
PLOT SCALE 0.50:1 SHEET 1 OF 1

PROPRIETARY  
THIS DOCUMENT CONTAINS CONFIDENTIAL, PROPRIETARY INFORMATION  
THAT IS FOX PROPERTY. DO NOT DISCLOSE TO OR DUPLICATE  
FOR OTHERS EXCEPT AS AUTHORIZED BY FOX.

4

3

2

1

ProE ASSEM